



Stella Di Marre Makadi

Customer Profile

Name: Stella Beach Resort & Spa.
 Sector: 5-stars hotel in Sharm El Sheikh,
 Egypt.
 Capacity: +607 rooms.
 Location: Hurghada - Safaga Rd, Safaga,
 Red Sea - Egypt.
 Year of Project: Jun 2023.

Partner:

Domain ITSP

▼ CHALLENGE

- Provide reliable, efficient and stable Wi-Fi to guest rooms, villas, restaurant and lobby.
- Centralized management for entire Wi-Fi network
- Reliable Switching capacity for converged applications

▼ SOLUTION

- **Access points**

- **EAP110-Outdoor**
(300Mbps Wireless N Outdoor Access Point)



- **EAP235-Wall**
(Omada AC1200 Wireless MU-MIMO Gigabit Wall Plate Access Point)



- **EAP245**
(AC1750 Wireless MU-MIMO Gigabit Ceiling Mount Access Point)



▼ LOCATIONS

- **EAP110-Outdoor**
Covering the outside areas like gardens, beach & pool.



- **EAP245**
Mounted on ceiling to cover the indoor areas like restaurants and corridors.



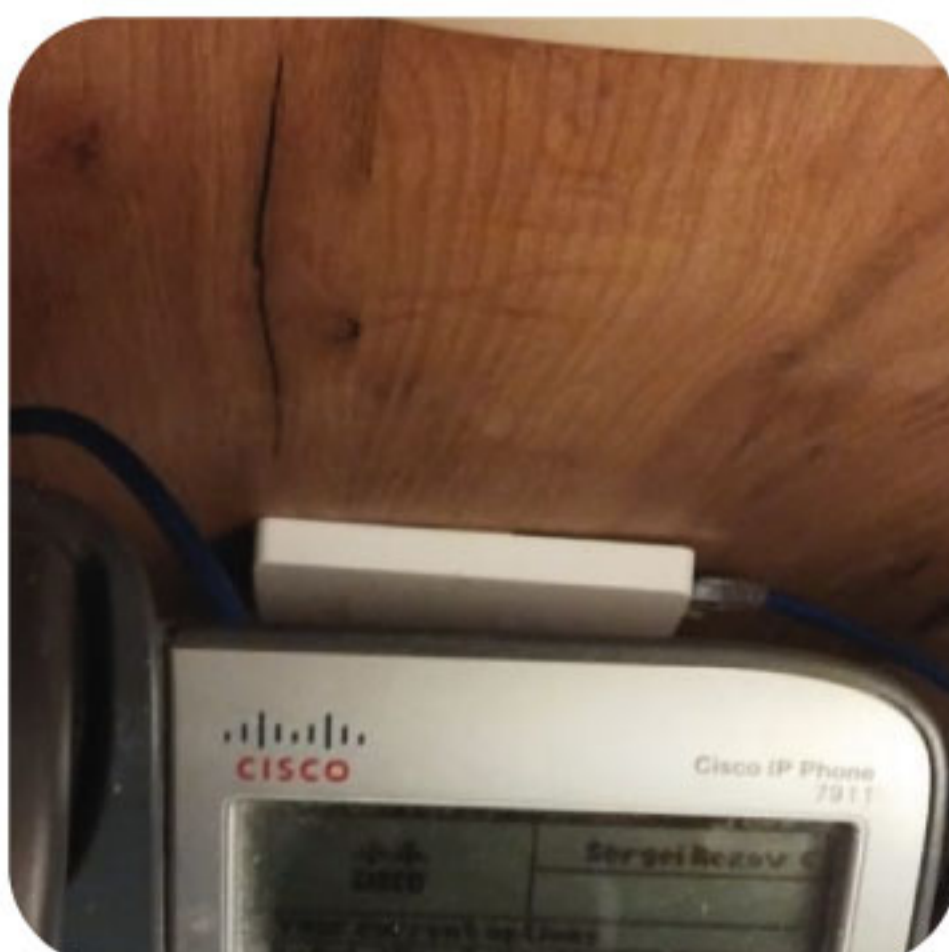
- **EAP245**

Mounted on ceiling to cover the indoor areas like restaurants and corridors.

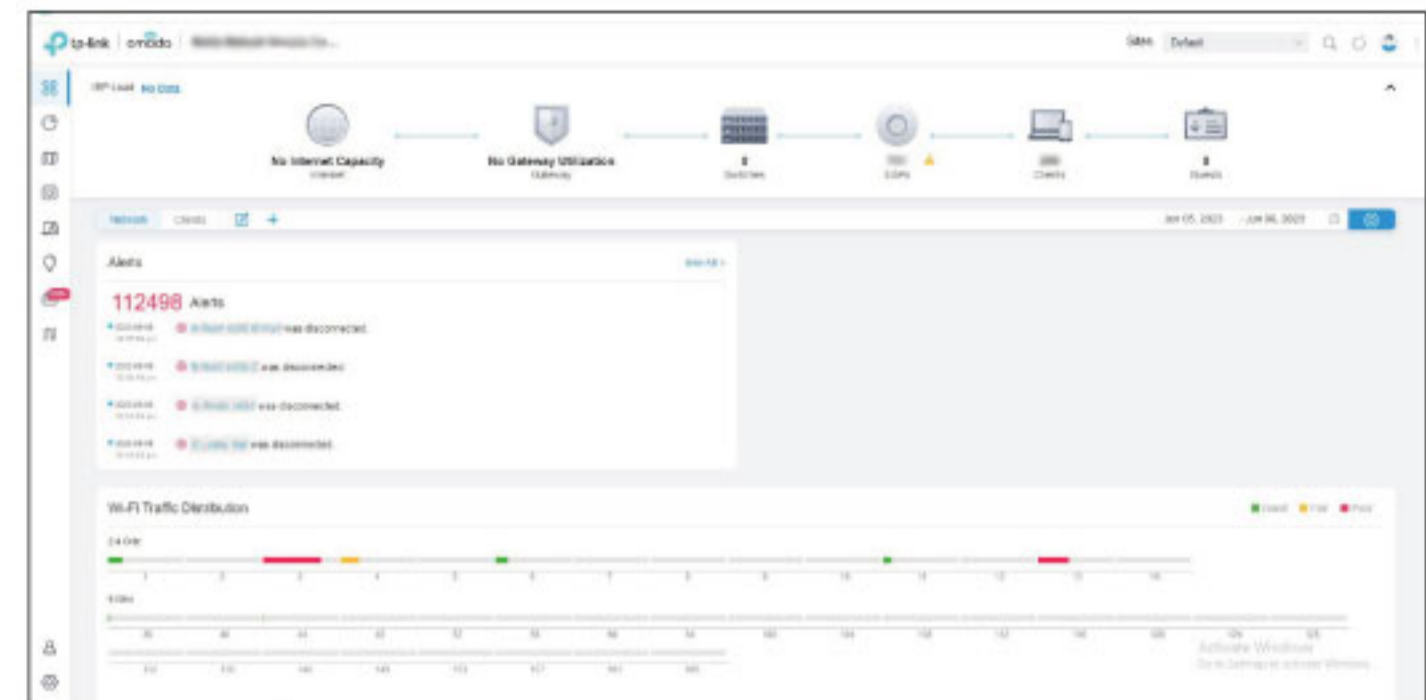


- **EAP235-Wall**

Mounted on wall to cover the indoor areas in the rooms & offices compatible with existing IP phones.



- A real screenshots of **Omada Controller Management System** showing the easy interface.



USERNAME	IP ADDRESS	STATUS	SESSION	APPOINT	ACTIVITY DOWNLOAD SPEED	DOWNLOAD	UPLOAD	UPTIME	ACTION
10.10.10.10	192.168.1.10	Connected	WLAN	0.000000	0.000000	0.000000	0.000000	0:00:00	[Icons]
10.10.10.11	192.168.1.11	Connected	WLAN	0.000000	0.000000	0.000000	0.000000	0:00:00	[Icons]
10.10.10.12	192.168.1.12	Connected	WLAN	0.000000	0.000000	0.000000	0.000000	0:00:00	[Icons]
10.10.10.13	192.168.1.13	Connected	WLAN	0.000000	0.000000	0.000000	0.000000	0:00:00	[Icons]
10.10.10.14	192.168.1.14	Connected	WLAN	0.000000	0.000000	0.000000	0.000000	0:00:00	[Icons]
10.10.10.15	192.168.1.15	Connected	WLAN	0.000000	0.000000	0.000000	0.000000	0:00:00	[Icons]
10.10.10.16	192.168.1.16	Connected	WLAN	0.000000	0.000000	0.000000	0.000000	0:00:00	[Icons]
10.10.10.17	192.168.1.17	Connected	WLAN	0.000000	0.000000	0.000000	0.000000	0:00:00	[Icons]
10.10.10.18	192.168.1.18	Connected	WLAN	0.000000	0.000000	0.000000	0.000000	0:00:00	[Icons]
10.10.10.19	192.168.1.19	Connected	WLAN	0.000000	0.000000	0.000000	0.000000	0:00:00	[Icons]
10.10.10.20	192.168.1.20	Connected	WLAN	0.000000	0.000000	0.000000	0.000000	0:00:00	[Icons]

♥ **BENEFITS**

- Wi-Fi coverage is available for inside and outside areas.
- An intuitive user interface allows the hotel's personnel to efficiently configure and monitor the entire network.
- Abundant features optimize network performance, providing a stable and secure network connection for every guest.